

# Woodhill Heights Development

## Fourth Avenue, Whangarei

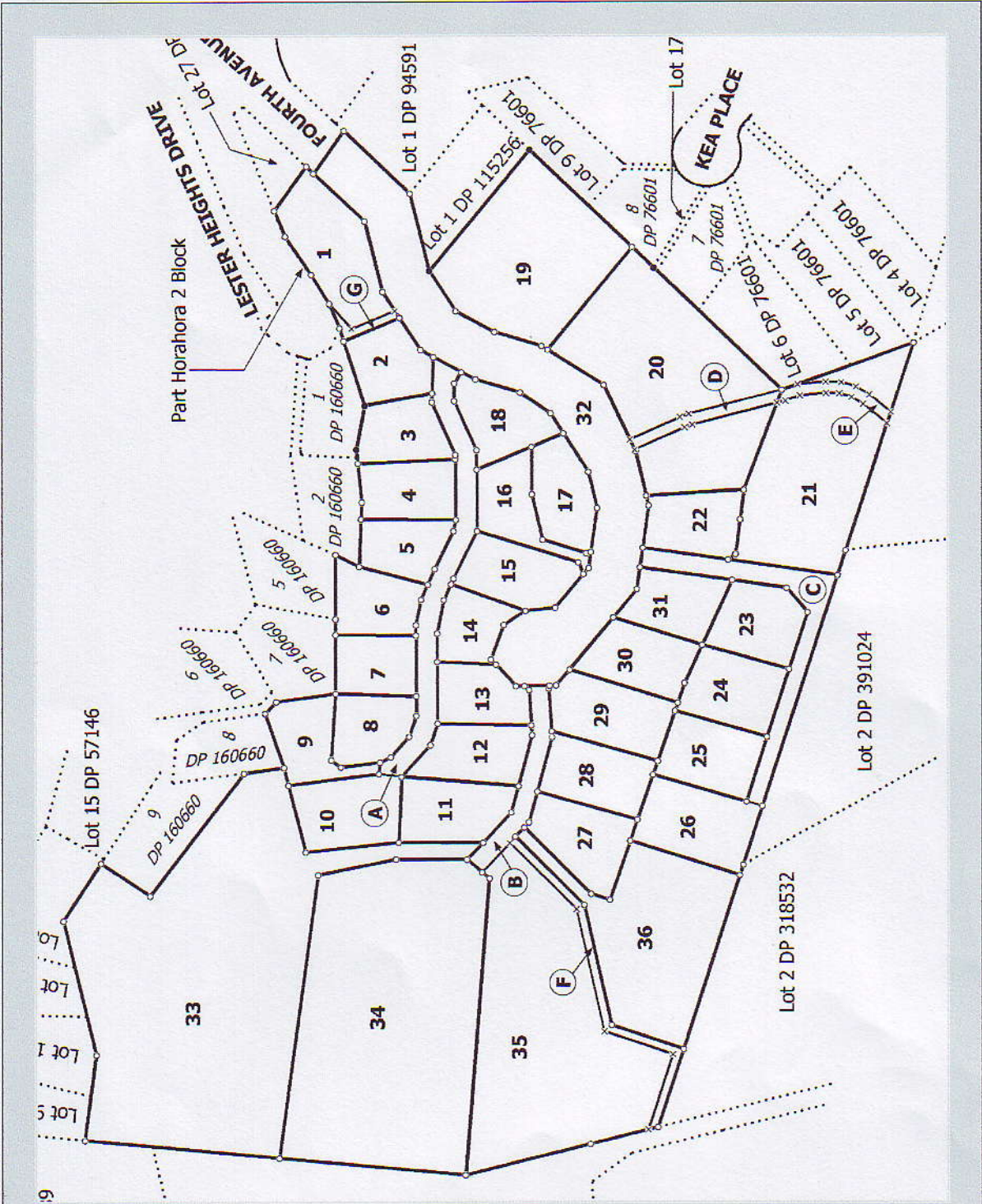
Workman Properties Limited in conjunction with Pacific Homes Limited offers 36 lots ranging in size from 605m<sup>2</sup> to 9053m<sup>2</sup>

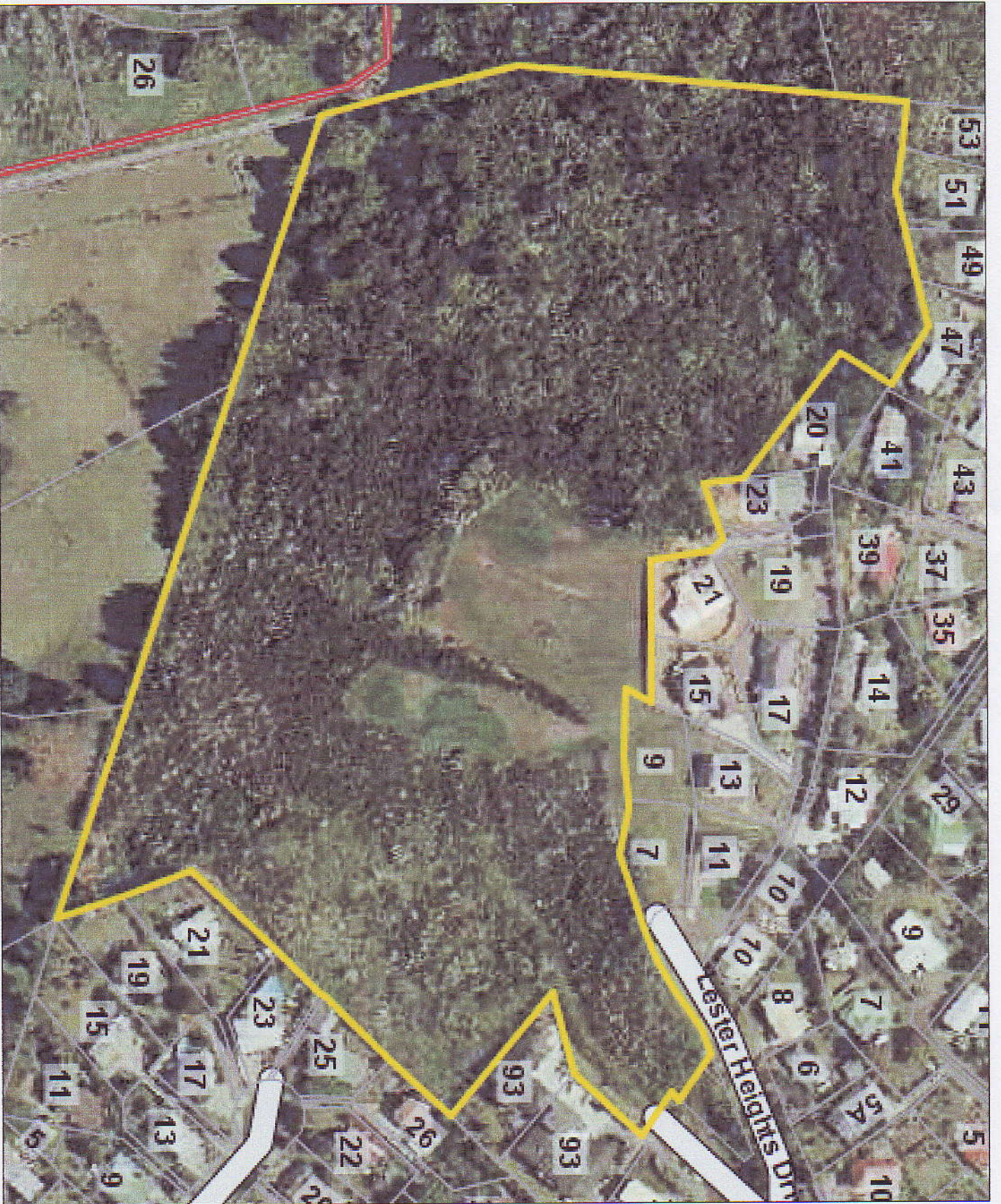


Covenanted sections with panoramic views over Western Hills, Maunu, City Centre, Whangarei Harbour and beyond.  
Close to the city and Hospital.

Home and land packages available from Pacific Homes Limited.

Lot #	Size m2	Lot #	Size m2
1	1292	19	2778
2	665	20	3902
3	659	21	2970
4	697	22	723
5	605	23	782
6	687	24	838
7	606	25	822
8	651	26	2027
9	680	27	859
10	2102	28	830
11	826	29	943
12	758	30	807
13	641	31	701
14	564	32	4731
15	819	33	9053
16	686	34	6844
17	733	35	5777
18	731	36	2724





Workman Properties Limited are the developers of this subdivision and are working in conjunction with Pacific Homes Limited, a locally owned and operated family company with 4 generations of building experience in Whangarei.

# About Pacific Homes Limited

Pacific Homes is a locally owned family business with over 100 years of building experience, which has been responsible for a thousand + houses in the Whangarei area.

At the outset Pacific Homes were synonymous with quality brick and tiles homes at affordable prices, this has not changed today. Although today they are now known for providing excellent quality homes in all ranges, while still providing superb quality and value for money.

## **Design**

Pacific Homes employs its own architectural designers who are available to help you with your own personalised plan or adjust one from our extensive range of pre designed properties to suit your needs.

## **Our Design Service**

Pacific Homes offer a professional design service that works. Our Sales Consultant and Architectural Designer will meet with you on your property or at our offices at Onerahi shopping centre and discuss fully your requirements and then produce a concept plan of the property. That's total peace of mind, based on years of experience.

## **Fixed Price Contract**

The price of everything is calculated carefully and accurately. We guarantee you a fixed price quotation.

## **An exciting building experience.**

Pacific Homes will build you a property that is competitively priced and will be of exceptional design and quality that will provide you with an investment you will be proud to own.

## **Experience & Reputation.**

You will benefit from the experience, reputation and expertise Pacific Homes has gained over their many years of building new properties.

## **Total Quality Assurance.**

Your property is built by craftsmen, by people dedicated to using their skills and knowledge to create a property, your property.

**Some examples of different types of properties Pacific Homes have recently built**

